

# Zavanti ERP Installation Guide

## V14

This document is a guide to install a new instance of Zavanti ERP on the required server. This document can also be used when upgrading from previous version of installed Zavanti ERP.

**NOTE: YOU MUST uninstall previous versions of Zavanti ERP before installing V14. Please contact Zavanti Support if you are on Version 11 or prior before performing this installation**

---

### Pre-requisites

- Ensure SQLBase has been installed prior to Zavanti ERP install
- Ensure that a valid Zavanti database has been installed as part of the SQLBase installation
- Ensure you have a valid licence key for the Zavanti ERP version you are installing. Please contact support@zavanti.com if you do not have a valid licence key.
- Ensure you run this process from the Zavanti ERP server machine with full administrator user rights
- Download and unzip the installation file as directed by Zavanti support. This must be a 'full installation version' of Zavanti ERP
- Use this guide only if upgrading from Version 12 or newer.
- Contact Zavanti support if you are upgrading from Version 11 or 10

---

### Uninstall previous version(s)

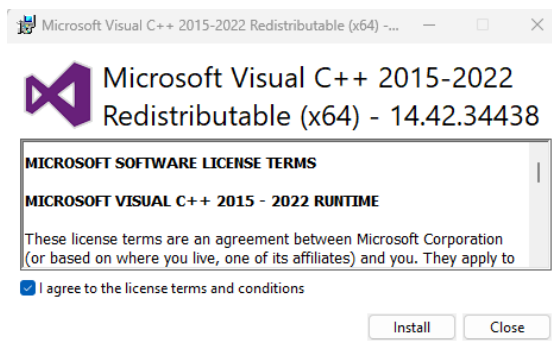
1. Use Add/Remove Programs to UNINSTALL existing version of Zavanti ERP.
2. Run the uninstall and follow the prompts
3. The uninstall will NOT delete any folders, or files from c:\program files\zavanti\erp folders that were not part of the previous version. Do not remove these files. They will be used with the new version.

4. Disconnect the MAPPED Zavanti drive (usually L:)

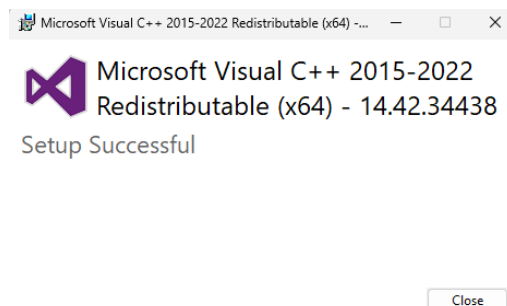
Note	Failing to do this may cause the Installation to stall at step 8 in the installation process. The drive will be remapped and connected during the installation
------	--

## Running the Installation

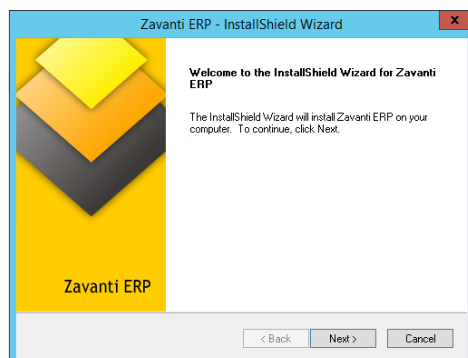
1. Run the install and follow all prompts.
2. The Zavanti install will check if the MS Visual C++ 2015-2022 redistributable pack (64 bit), required to run Zavanti already exist on the server. If not, they will prompt the user to install.
3. Read and agree to the MS license agreement and click 'install'



4. Once setup is complete click 'close' for next step



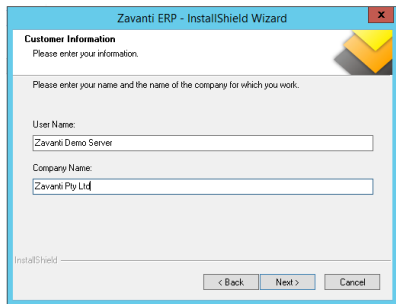
5. Once setup is complete click for next step
6. Click NEXT to commence the installation



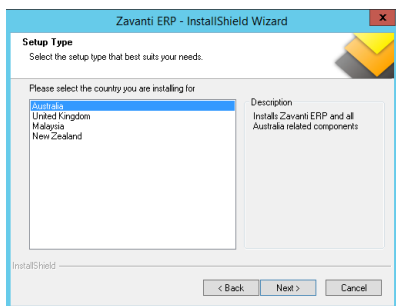
7. Read and accept the license agreement



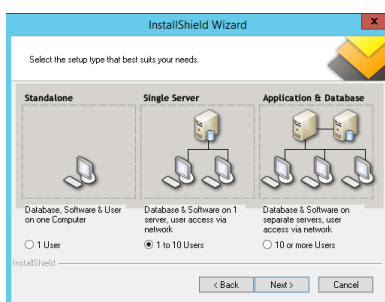
## 8. Enter your Username and the Company Name



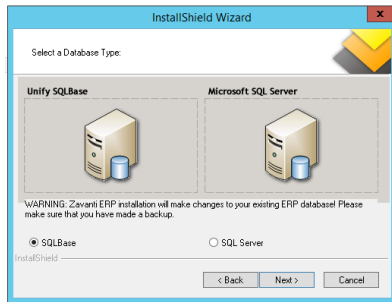
## 9. Select the appropriate country from the list provided



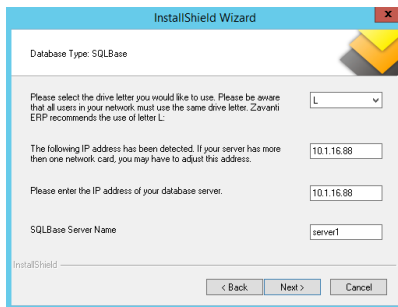
## 10. Select the 'Single Server' installation type as shown, unless otherwise advised by Zavanti support



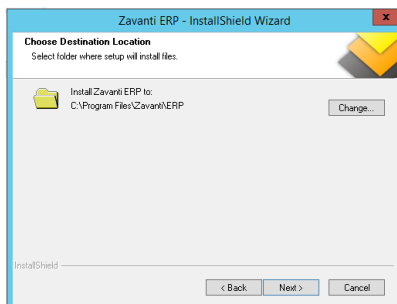
## 11. Select SQLBase as shown, unless otherwise advised by Zavanti support



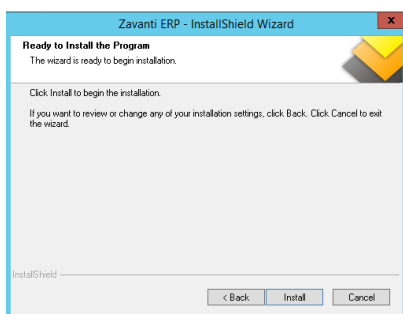
12. Check the drive letter and reselect if necessary



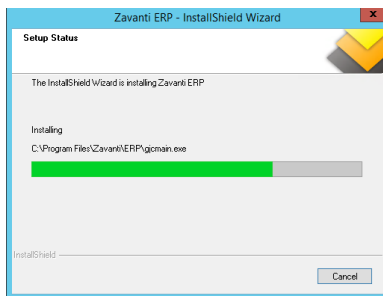
13. Zavanti recommends using L:\ however customers may need to change this depending on their network set up. Use the same mapping as the previous version.
14. Check the IP address and change if necessary. Both these fields should be set to the IP address of the server that Zavanti and SQLBase is installed
15. Check the Server Name and change if necessary. This is set to 'server1' by default, as per the SQLBase installation
16. Select the destination location for the Zavanti software



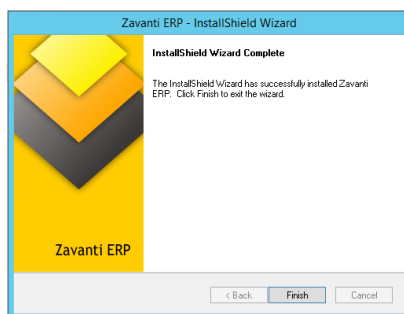
17. It is recommended to leave the default settings; however, this can be changed by clicking on the Browse button
18. Press "Install" to begin installation



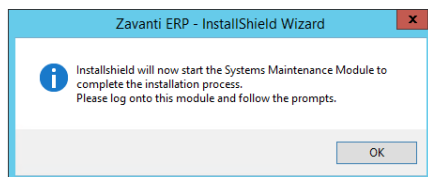
19. A 'Status' progress bar is displayed once the installation has commenced



20. Once complete, you will be prompted to 'Finish'



21. On completion of the install, you will be prompted to run the 'System Maintenance' module



22. Click 'OK' and do not cancel

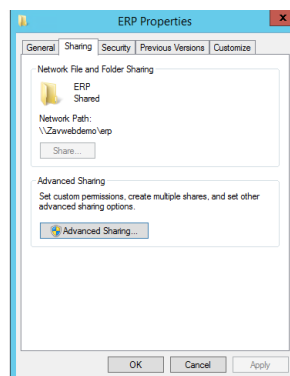
23. This might include entering of the new licence key

24. Run System Maintenance and follow the upgrade prompts.

## Post installation

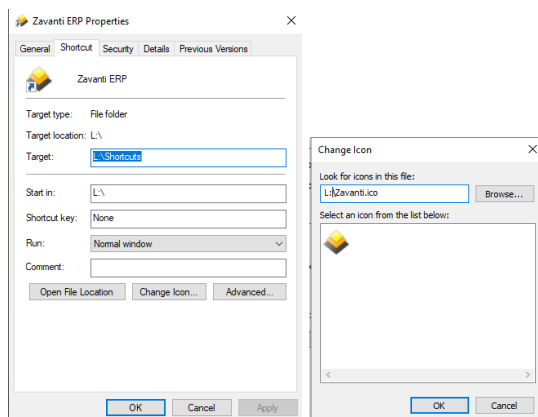
Note	Use this section if completely new installation only
------	--

1. Create a network share example "ERP" to the c:\program files\Zavanti\ERP folder, if this was not created by the installation



2. Ensure that TCP PORT 2155 is open on the windows firewall and virus protection software that may be running
3. On each user workstation, MAP a network drive (as specified in “Running the Installation: step 10”) to the share created in step 1 above. Example “L:\”. This should be set up in the windows login policy for each user
4. On each user workstation, run the “L:\support\client installation\ERPClientInstallation14.exe”.
5. This will check if the MS Visual C++ 2015-2022 redistributable pack (64 bit), required to run Zavanti already exist on the workstation. If not, they will prompt the user to install. (see: “Running the Installation: steps 2-4”)
6. On each user workstation, create a Shortcut to run the Zavanti modules. To do so, navigate to L:\shortcuts and create a shortcut to this folder on the desktop. Rename this shortcut to

“Zavanti ERP”, and change the icon to



**Note**

To simplify this process for multiple workstations, you can also create a shortcut on the server, and simply copy to user's desktop. You may prefer to create the shortcut direct to the most regularly used module - e.g. Development Ledger.